

BASIC TROUBLESHOOTING GUIDE

PROBLEM 1: Brushes would not spin no audible sound of motor running.

SOLUTION1: Check connections see page 6 assembly and connections for connections guide. It is possible that connections might be loose or improperly attached,

SOLUTION2: Check power switch, and mains supply. It is possible that there is no power from the mains supply or the power switch is defective.

SOLUTION3: Check for loose connections inside the unit. Unit can be opened up as seen in page 11. Check for visible loose wiring or disconnections.

PROBLEM 2: Brushes would not spin with audible sound of motor running.

SOLUTION1: Pull out debris tray and check for foreign objects blocking the spinning motion of the brushes. Remove blockage if found.

SOLUTION2: Check rubber belt. Rubber belt may have come loose or has reach the end of its life. Re-attach or replace with new belt when appropriate.

PROBLEM 3: Cleaning or polishing efficiency has diminished.

SOLUTION1: Check if brushes are full of debris. Remove excess debris if possible. Replace cleaning brushes if beyond usable condition.

SOLUTION2: Check rubber belt. Rubber belt may have deteriorated causing loss of friction to keep the brushes spinning at optimum speed and torque. Replace rubber belt if deterioration is causing ineffective cleaning or polishing results.

OTHER PROBLEMS NOT MENTIONED:

Contact the vendor.

Manufacturer:

AOYUE TONGYI ELECTRONIC EQUIPMENT FACTORY

Jishui Industrial Zone, Nantou, Zhongshan City,

Guangdong Province, P.R.China

<http://www.aoyue.com>

AOYUE[®]

128

TIP POLISHER

INSTRUCTION MANUAL

Thank you for purchasing Aoyue 128 Tip polisher.
It is important to read the manual before using the equipment.
Please keep manual in accessible place for future reference.

CARE and MAINTENANCE

This manual is designed to familiarize and instruct the operator with the proper usage and maintenance of the equipment. Please read carefully and observe the guidelines in order to maximize usage and minimize the risk of injury or accidents .

TABLE OF CONTENTS

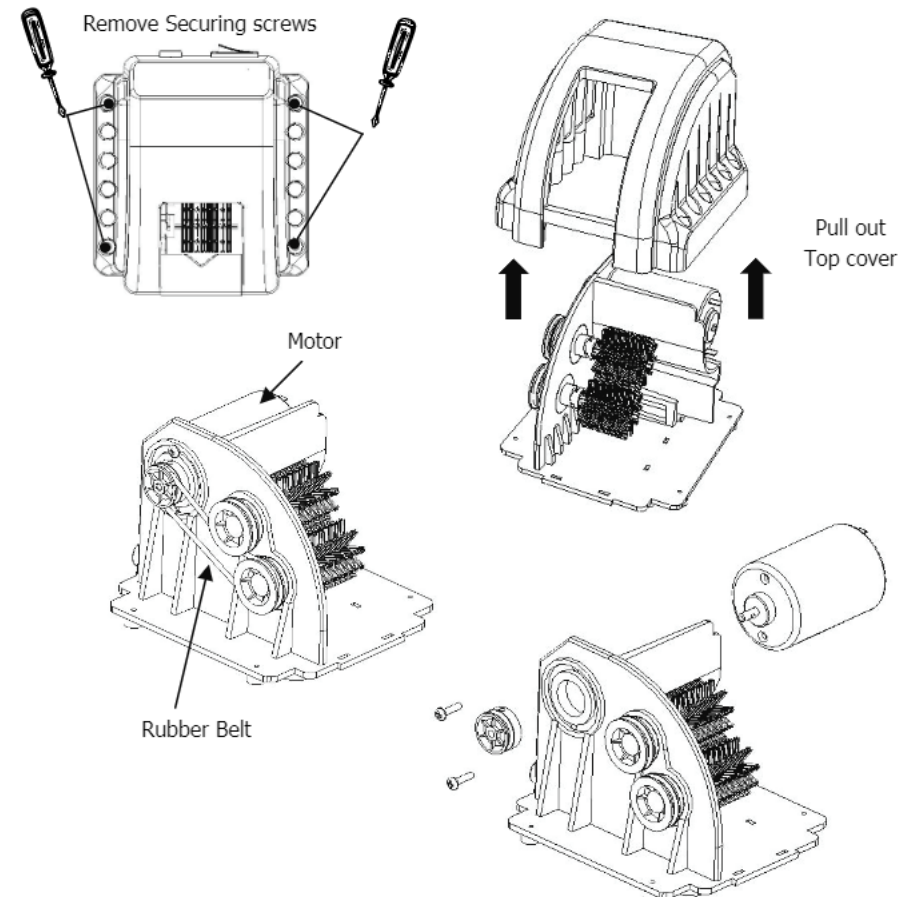
Product Description / Features.....	3
Specifications	3
Package Inclusion	4
Power Switch & Connection	4
Safety Precautions	5
Assembly and Preparation	6
Operating Guidelines	7—9
Care and Maintenance	10— 11
Basic Troubleshooting Guide	12

Rubber Belt

When the cleaning brush has reached the end of its life. Noticeable when cleaning and polishing is not as effective and bristles are all worn out. The brush can be changed by pulling out the holder pins and exchanging the cleaning brush with a new set.

Motor

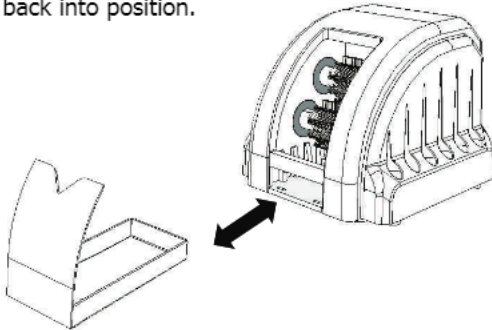
In the event the motor has reached the end of its life the motor can be changed and accessed as seen in the exploded view of the 128 system.



CARE and MAINTENANCE

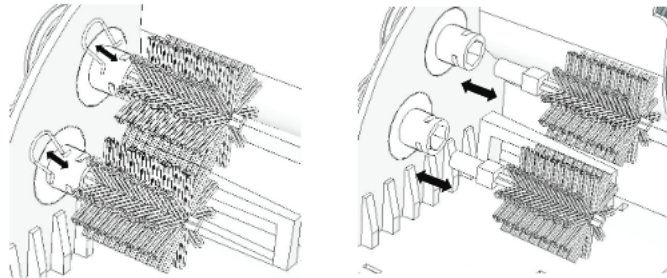
Debris Tray

The debris tray should be routinely cleaned. Simply pull out the tray from the unit to clean tray. Push the tray back in and the magnetic system will automatically lock the tray back into position.

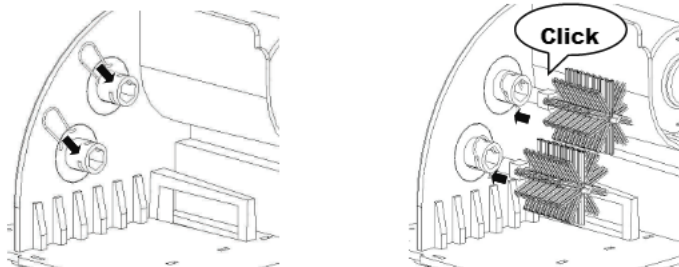


Cleaning Brush

When the cleaning brush has reached the end of its life. Noticeable when cleaning and polishing is not as effective and bristles are all worn out. The brush can be changed by pulling out the holder pins and exchanging the cleaning brush with a new set.



To place the new brush in place the clip first then push in the brushes until a click is heard, signifying the brushes are locked properly into place.



PRODUCT DESCRIPTION / FEATURES

The **Aoyue 128 Tip Polisher** is a must have accompaniment for modern soldering tools. With current lead-free policies and miniature surface mount components the need for precision soldering tips are essential in every electronics work place. The Aoyue 128 tip polisher's high speed brush system, removes stubborn oxides and restores the tip's luster. This allows us to keep these precision soldering tips at pristine condition for efficient soldering and quality results.

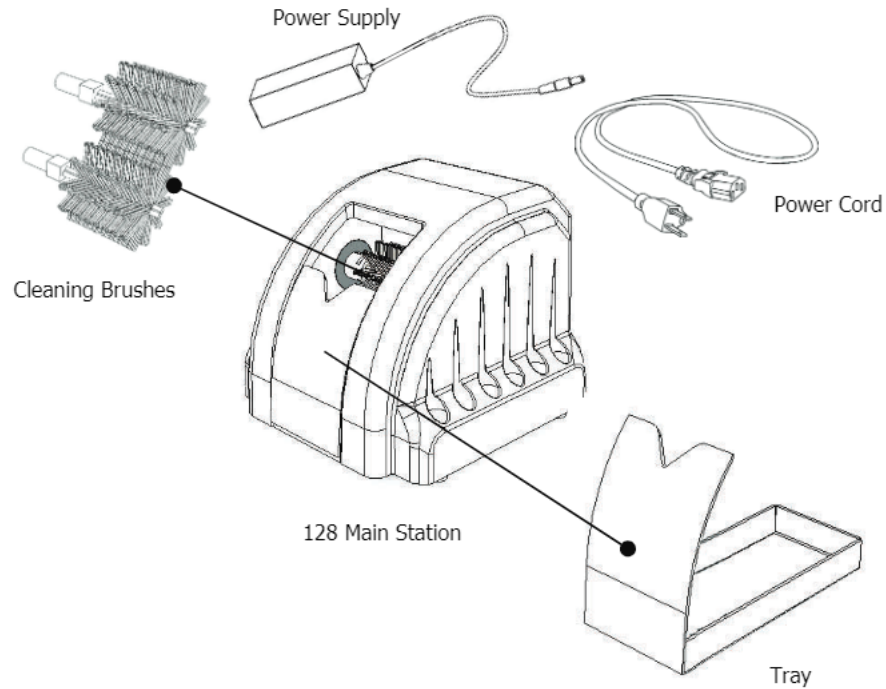
When used as a tip cleaning tool it effectively brushes away oxides and excess solder for perfect control of the amount of solder applied. Unlike wet sponges that drastically lowers tip temperature when cleaning, the high speed brush system of the Aoyue 128 quickly whisks away the excess solder with minimal temperature variation on the tip.

The system is designed to be compatible with our lead free and standard soldering iron tips. Tips can be placed on the 12 available tip holders for easy access. Cleaning is convenient with the removable aluminum tray and magnetic system automatically snaps the tray back into position.

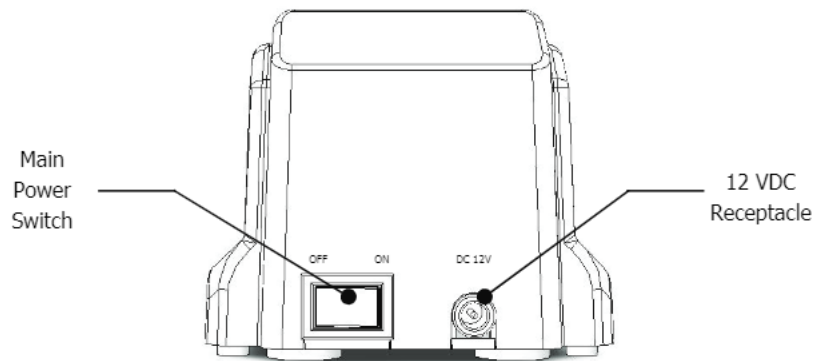
SPECIFICATION

Power Supply	
Type:	Switch mode supply
Voltage Input:	100-240V AC
Current:	1.5 A
Voltage:	12 V DC
Main Unit	
Voltage:	12V DC
Current:	0.8 A
Outer Dimensions:	97(w)x105(l)x 85(h) mm
Weight:	340 grams

PACKAGE INCLUSIONS



POWER SWITCH & CONNECTION



OPERATING GUIDELINES

C. Tip Cleaning

Tip cleaning is the process of removing unwanted flux and excess solder on the tips prior to soldering. This enables us to precisely control the amount of flux applied and minimize contamination of solder joints due to residual flux and debris from previous soldering process.

The high speed twin brush system efficiently removes solder and debris with minimal variation to tip temperature.

1. Insert tip briefly in-between the cleaning brush.
2. Tip can be cleaned in less than a second. (Based on T-I Tips)
3. Proceed with soldering of joints after tip is cleaned.
4. If tip will not be used after cleaning coat tip with solder to protect tip from oxidation.
5. Turn off unit and unplug from power source after usage.



CAUTION: There is a high risk of hot solder particles splattering during tip cleaning. Maintain a safe distance and wear appropriate protection for the eyes and skin.

OPERATING GUIDELINES

IMPORTANT REMINDERS:

1. Make sure the equipment is placed on a flat stable surface.
2. Ensure all terminal connections are properly secured.
3. Do not place hot tips on the tip holders.

B. Tip Polishing

Tip polishing is the process of removing the unwanted film of oxidizes and charred particles that have adhered to the soldering iron tips. Polishing allows us to regain use of tips by removing the heavily oxidized layer and inspecting the tip for damage. Damaged tip such as those with worn-out electroplated layers cannot be restored by polishing.

The high speed twin brush system allows fast and effective removal of tough oxides and stubborn residue sticking to the tips.

Light Polishing:

1. For light oxidation the tip can be polished without heating up the tip.
2. With the tip at room temperature, simply insert the tip into the cleaning system until most of the visible oxidation have been removed.
3. After which the solder soldering iron with the tip attached should be immediately coated with a layer of solder to protect the tip from further oxidation.

Heavy Polishing:

1. With heavy oxidation the tip will need to be heated up to temperatures that would allow solder to melt. (typically 250- 300 degrees Celsius).
2. Applying solder (with a flux core) to the tip then insert the tip into the cleaning system. Repeat procedure until most of the visible oxidation have been removed.
3. Coated the tip with a layer of solder to protect the tip from further oxidation.



CAUTION: There is a high risk of hot solder particles splattering during tip polishing. Maintain a safe distance and wear appropriate protection for the eyes and skin.

SAFETY PRECAUTIONS



CAUTION: Improper usage can cause serious injury to personnel and/or damage to equipment. For your own safety, please observe the following precautions.

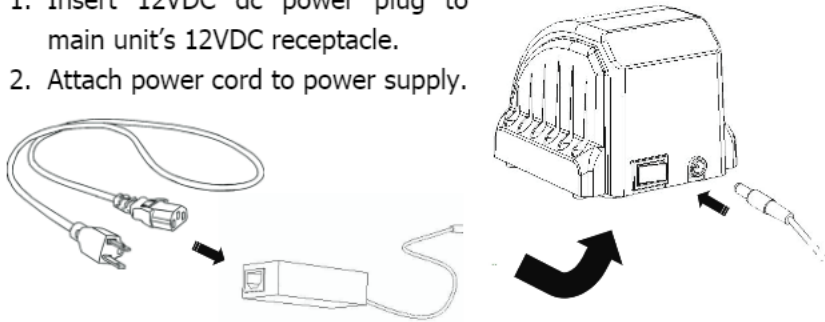
- Check each component after opening the package to make sure everything is in good condition. If there are any suspected damage, do not use the item and report the issue to your vendor.
- Turn OFF the main power switch and unplug the device when moving the device from one location to another.
- Do not strike or subject the main unit to physical shock. Use carefully to avoid injury and damage to any part.
- Handle with care.
 - Never drop or sharply jolt the unit.
 - Contains delicate parts that may break if the unit is dropped.
- Molten solder's temperature may reach as high as 480°C . When cleaning tips with hot and molten solder on the tips, there is danger of solder splatter.
- Do touch spinning brushes.
- Do not attempt to clean or polish items other than those specified. There is risk of damage to the unit or its components if system is improperly used.
- Disconnect the plug from the power source if the unit will not be used for a long period.
 - Turn off power during breaks, if possible.
- Use only genuine replacement parts.
 - Turn off power and let the unit cool before replacing parts.
- Do not place hot tips on the tip holders.



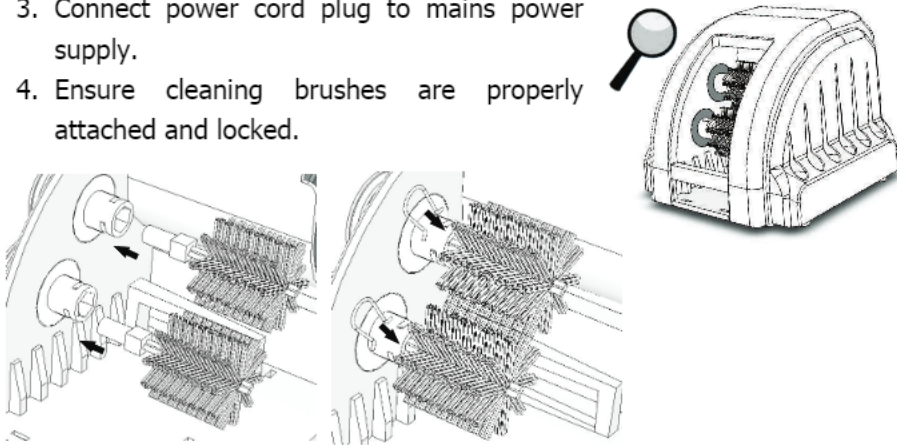
CAUTION: There is a high risk of hot solder particles splattering during tip cleaning or polishing. Maintain a safe distance and wear appropriate protection for the eyes and exposed skin.

ASSEMBLY and PREPARATIONS

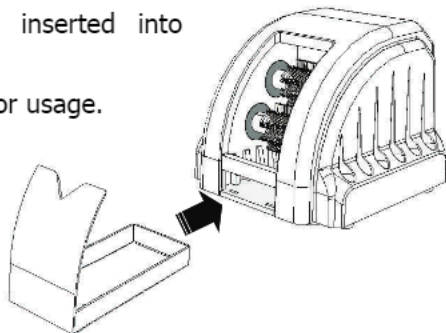
1. Insert 12VDC dc power plug to main unit's 12VDC receptacle.
2. Attach power cord to power supply.



3. Connect power cord plug to mains power supply.
4. Ensure cleaning brushes are properly attached and locked.



5. Ensure tray is properly inserted into position.
6. Unit can now be turned on for usage.



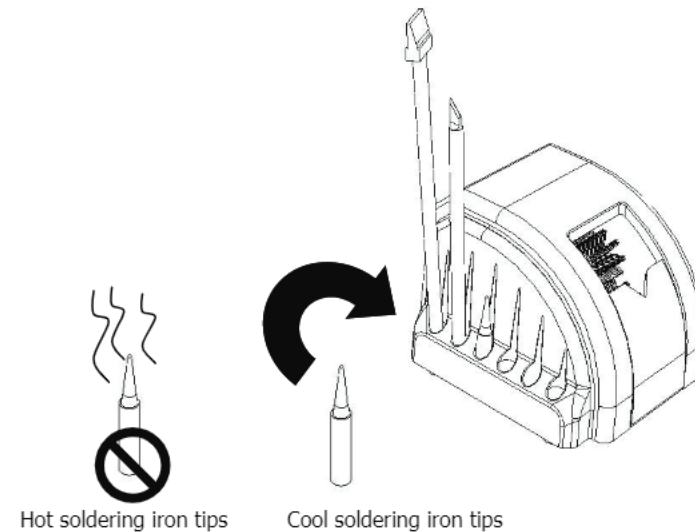
OPERATING GUIDELINES

IMPORTANT REMINDERS:

1. Make sure the equipment is placed on a flat stable surface.
2. Ensure all terminal connections are properly secured.
3. Do not place hot tips on the tip holders.

A. Tip holders

The Aoyue 128 is designed with twelve tip holders. It is compatible with our standard and lead free soldering iron tips. The tip holders are for storage of cool tips only, hot tips should never be placed on the holder. Placing hot tips on the tip holders will damage the unit and may render the unit unusable.



⚠ WARNING: Never place hot tips on the tip holders.